

# *Broaden your expertise* **with a Moodle Educator Certification**



The Moodle Educator Certification (MEC) program is based on internationally recognised digital competences designed to help you become a more effective educator in today's growing digital workplace.

Whether you teach or train in an academic, corporate or non-profit environment, we will empower you to create an engaging experience for your learners within Moodle.



## Advance your career with credentials

- Engage with a program based on the widely used and accepted European Framework for Digital Competences for Educators (DigCompEdu)
- Enhance your reputation with official recognition for your expertise at managing Moodle courses
- Earn a badge for each of the six courses completed plus a Moodle Educator Certificate



## Strengthen the quality of education you provide

- Improve the quality of your courses and benefit your learners directly
- Contribute to the quality of your organisation's education programs
- Connect, collaborate and learn with other Moodle educators

✔ **6 courses**    ✔ **6 badges**    ✔ **1 certificate**

The MEC is available through Moodle Partners who have been trained and certified by Moodle HQ to facilitate the courses.

Over the six courses you'll explore six areas of expertise covering in total twenty-two digital competences, all of which you approach as a Moodle using educator.

You can take just one course and obtain a single badge, or complete the full program to obtain the MEC certificate.



# Program Structure

Each of the six courses covers an area of expertise relating either to an educator's professional environment, their pedagogical skills or to the online competence of their learners.

Each course introduces, practises and tests competences specific to that area. Educators who complete the full program are empowered to use Moodle at an advanced level in all aspects of their digital interactions.

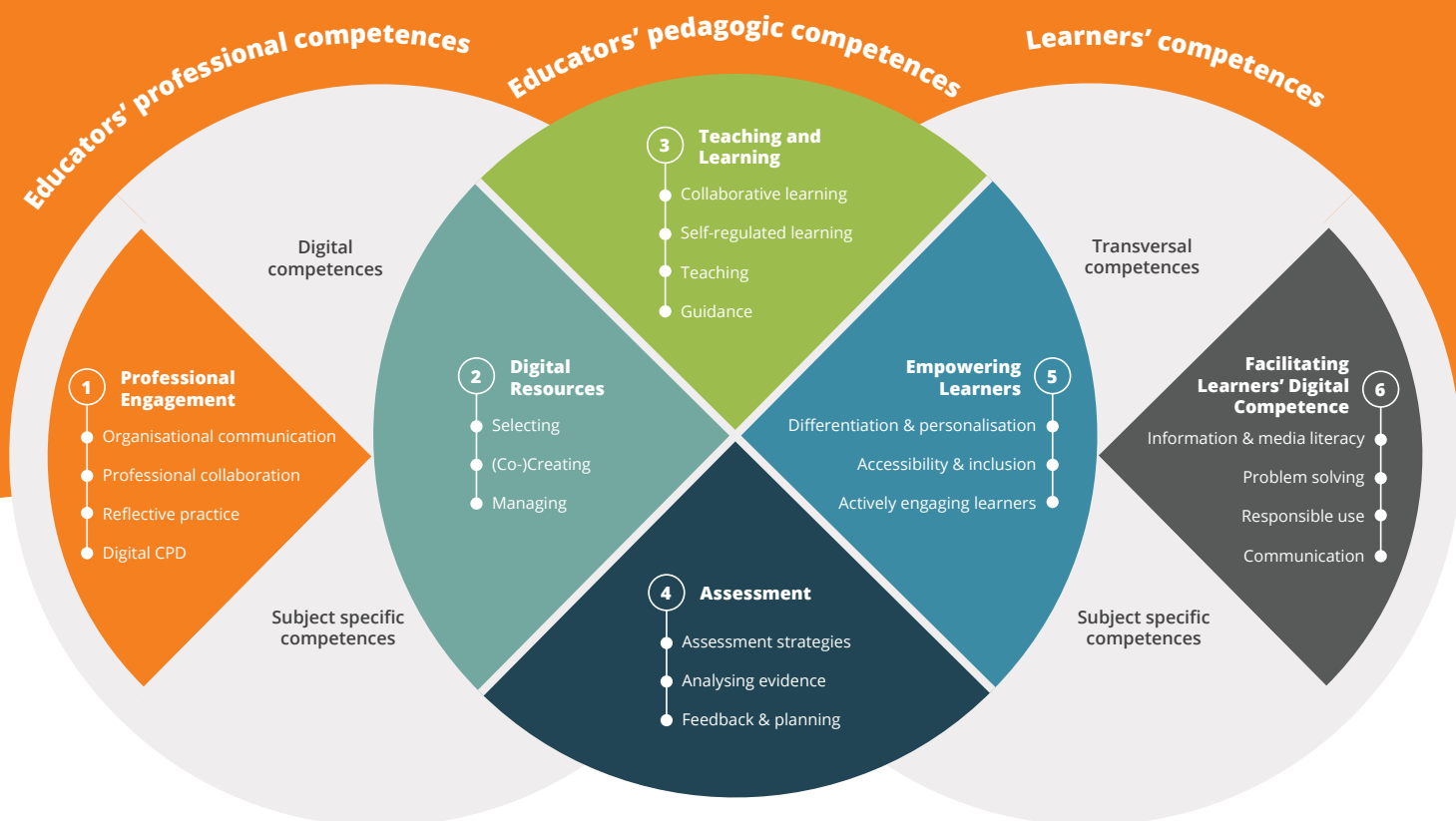


Image courtesy of Redecker, C. European Framework for the Digital Competence of Educators: DigCompEdu. Punie, Y. (ed). EUR 28775 EN. Publications Office of the European Union, Luxembourg, 2017. Note: Source image colours have been modified by Moodle



# Content designed to engage you

As an MEC candidate, you'll work online in a group on a dedicated Moodle Workplace™ site, guided by your facilitator.

Each competence will be introduced and covered in a detailed but easy to read way, and you'll be tested formatively as you progress through the program.

A wide range of case studies presenting pedagogical problems solved by Moodle in a variety of teaching contexts will inspire you to apply similar solutions in your own organisation.

Two summatively assessed tasks in each course challenge you to explain, reflect and demonstrate both your knowledge of Moodle and digital competence. You'll be graded using the A1- C2 proficiency levels, implemented globally in language teaching and adapted from DigCompEdu.



## Advance your career today

To register, find out more and be allocated a Moodle Partner to work with you on the MEC, complete the form on [moodle.com/mec](https://moodle.com/mec)